

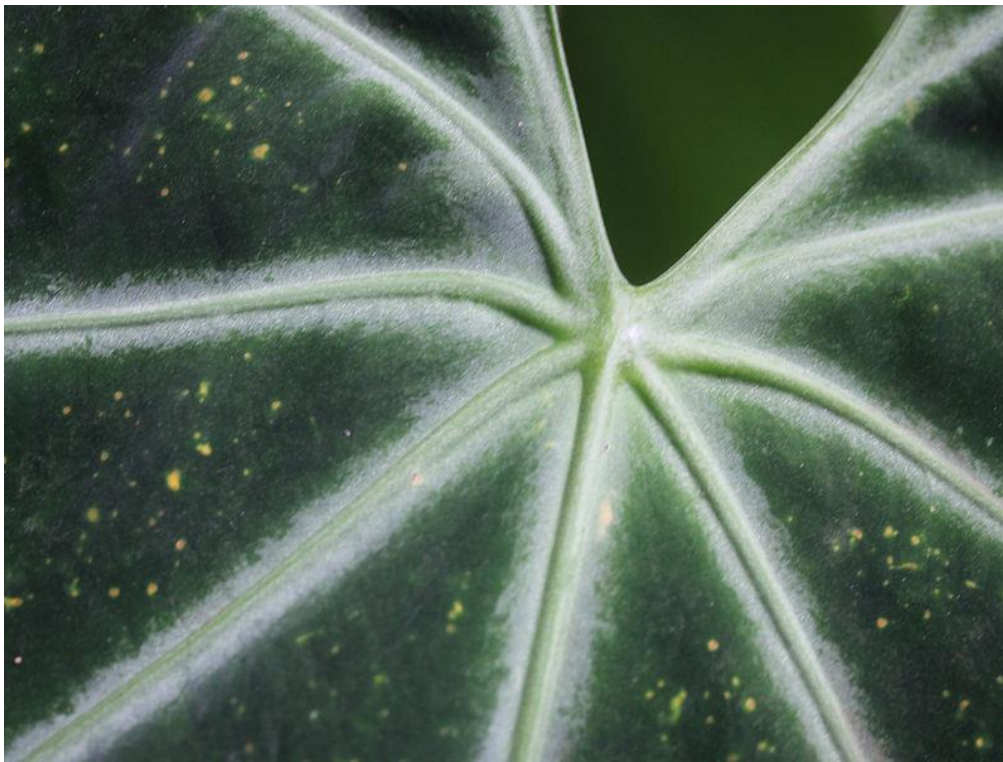
Nature's Artistic Patterns

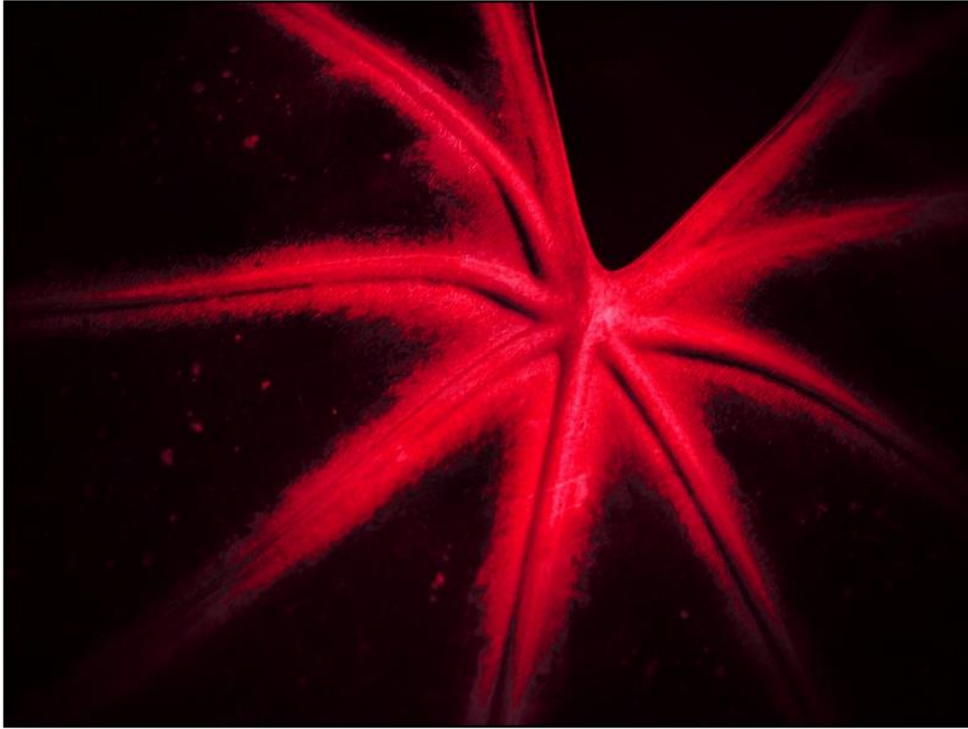
By Don Sutherland

If one spends time in nature, be it the countryside or one of New York City's parks, one becomes aware that nature is filled with forms, shapes, patterns, and colors. With a light rain starting to fall on Saturday, I spent some time in the New York Botanical Garden's conservatory observing some of the patterns found on the leaves within.

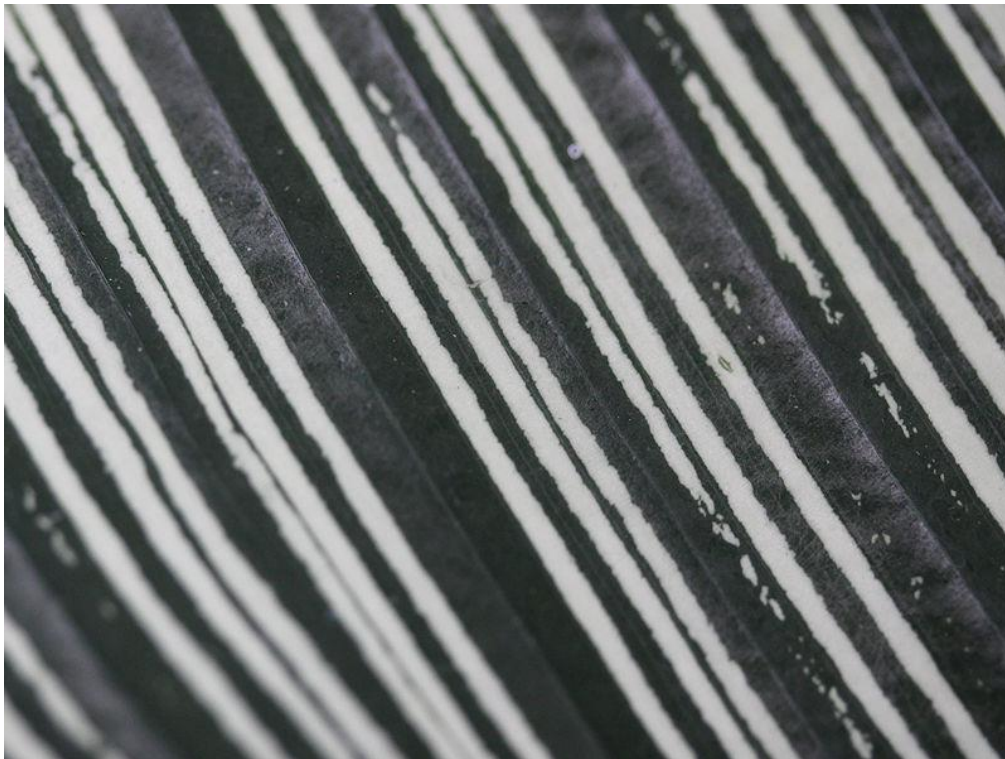
Below are three patterns. The first of each pair of images is the actual leaves. The second is an artistic rendering.

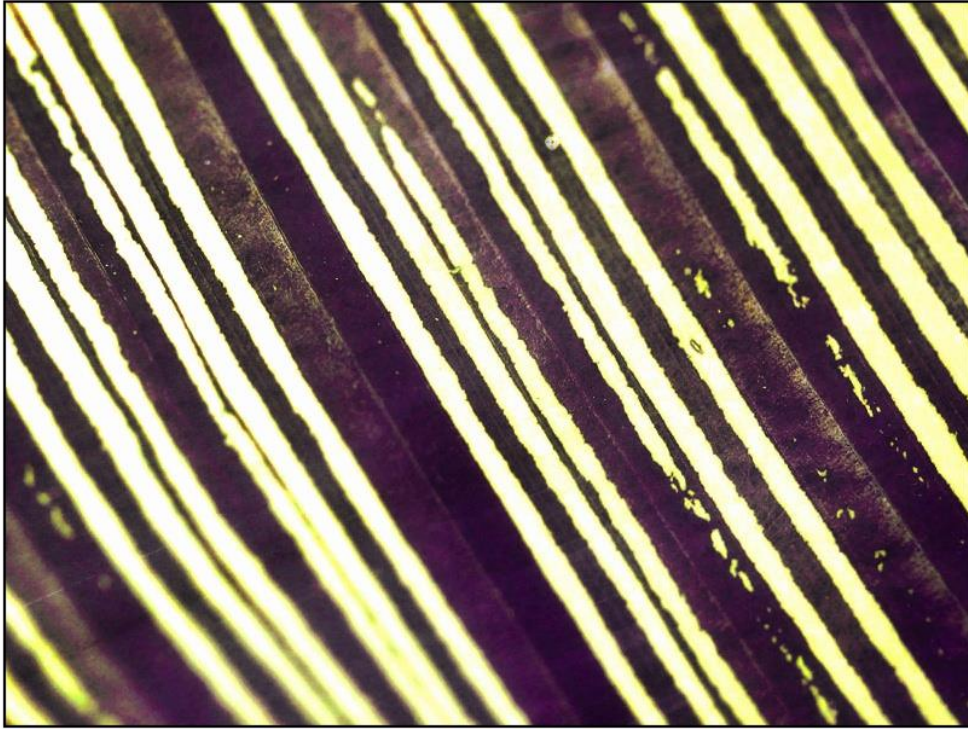
Anthurium:





Calathea:





Bromeliad:

